

GLOBAL **METAL** CONTRACTING EST.
موسسة المعدن العالمي المقاولات



GLOBAL METAL
BROCHURE V.5

▶ ABOUT US ◀

GLOBAL METAL is a specialized manufacture and supplier of engineered Metal Products. The company, solely owned by Mr. Mayouf Shawi Al Anaizy, was originally conceptulaized ,built and managed with Korean Expertise, Engineering and Systems 35 Years ago. The korean work ethics, attention to detail and technical strengths still are and will continue to be a very integral part of the GLOBAL METAL.

GLOBAL METAL are approved suppliers of All kinds of Steel Structures and Fabrication, especially Handhole Accessories, Manhole Accessories etc. used in various infra projects such as Telecommunication, Electrical, Construction and other works in accordance with ASTM, BS, DIN or as specified by the customer. Our list of clietele include STC (Saudi Telecom Company) / Lucent Technologies International Inc. / Mobily Telecom etc..

THE METAL PEOPLE

“ Quality, service, cleanliness, and value. ”



► TEAM

Our team comprises of an experienced management, qualified Engineers and skilled workers from Korea, India, Philippines, Sudan, Pakistan and Bangladesh, who have been accredited for their outstanding performances throughout the years. We also take pride in the fact that GLOBAL METAL is one of the few companies in KSA which possesses certified welders working on production of metal parts in-house. Our team also has an internal Engineering and Design Department who are qualified and able to do structural calculations and designs, thereby reducing the client's workload.

► FACILITIES

GLOBAL METAL's facilities are fully equipped with the most advanced equipment for the works it undertakes. The vast range of equipments and in-house expertise avoid and negate the need of any third party involvement for any part of the production, thereby eliminating the risks of unmonitored production. A lot of emphasis is given to the quality of the product from the stage of material procurement till the actual delivery takes place. The company's Quality Control Department is headed by experienced and technically sound engineers. We do not believe in selling cheap by compromising on specifications or quality standards and this has been one of our prime success points which has gifted us years of fruitful relations with the industry's best players. And our team's biggest achievement is when our clients refer to us their partners-and we are lucky that we are partners to many!

It is our sincere belief that an association with us will reinforce your belief in our team as a responsible, technically sound, capable and committed unit and we do believe that we will be strategic partner for all your project implementations.

Telecommunication Manhole, Mini manhole and Hand hole Accessories

▶ CABLE BRACKET



Cable Bracket shall be manufactured from approximately 4 mm thick steel, with capacity for Vertical load ≥ 1.5 kN and Horizontal load ≥ 1 kN, Cable bracket that is horizontally fixed at one end only and spaced at specified intervals along the manhole walls to support cables and cable joints.

Cable brackets will be available in the following nominal effective lengths,

Item code	Length in mm
CB100	100
CB250	250
CB350	350
CB500	500

▶ BRACKET SUPPORT

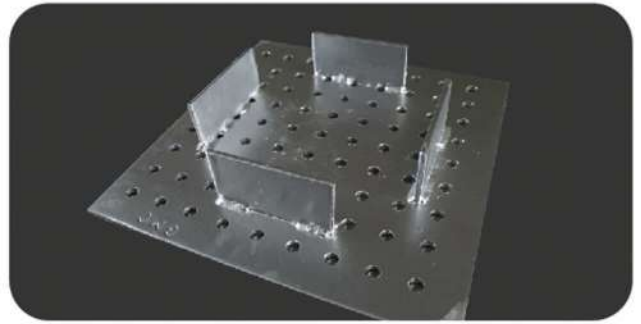


The Bracket support shall be manufactured from approximately 5mm thick steel, it will be able to with stand a vertical downward load of 1.5KN, with the load positioned at the end of the bracket away from the support.

Bracket Support will be available in the following nominal effective lengths,

Item code	Length in mm
BS0500	500
BS0600	600
BS0700	700
BS0800	800
BS0900	900
BS1000	1000
BS1200	1200
BS1500	1500
BS1800	1800
BS2000	2000
BS2300	2300

▶ SUMP COVER

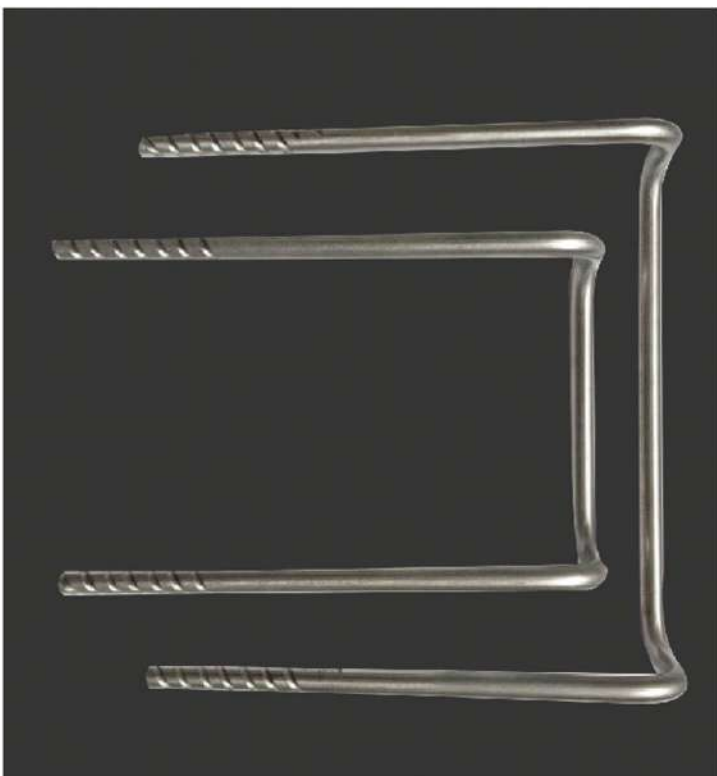


The sump cover will fit the manhole sump and shall not rock when installed. The sump cover shall be manufactured from a square steel plate, thickness of the steel is approximately 5mm with 10mm diameter holes and it will be capable to support a point load of $\geq 100\text{Kg}$.

Sump cover will be available in the following nominal effective lengths

Item code	Length in mm
SC300	300x300
SC400	400x400

▶ LADDER SUPPORT AND RUNG



Ladder supports are installed in the manhole entrance to support the ladder and the rungs are installed inside the manhole. The ladder support and rungs shall be manufactured from optional sizes and grade like Mild steel roundbar, deformed steel bar and stainless steel as per the customer's design. The extended width of this rung makes it very comfortable for use with both feet, as a rest or waiting position.



▶ "Z" TYPE SPACER



Spacers are used to fix the bracket support on the wall of manhole. The spacer shall be manufactured from optional sizes and grade like Mild steel flat bar and stainless steel as per the customer's design.



▶ PULLING EYE



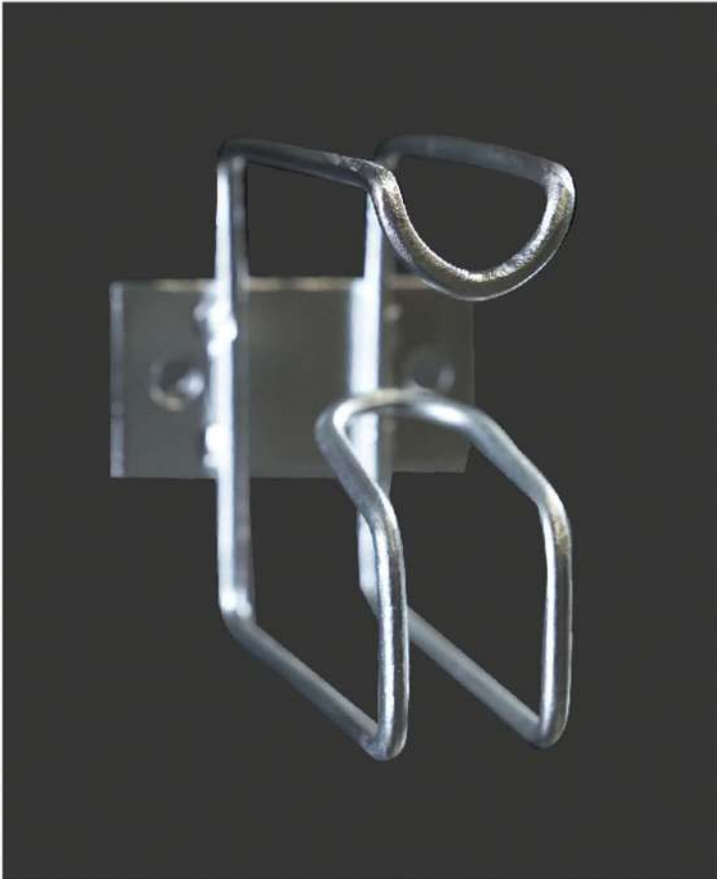
Pulling eyes are installed in manhole and Hand-hole opposite the duct entry face as an anchor for cable installation.

The pulling eye will be free from welds or connections, shall be manufactured from one continuous plain steel round bar and grade like Mild steel or stainless steel plain round bar and shall stand a pulling force ≥ 30 kN.



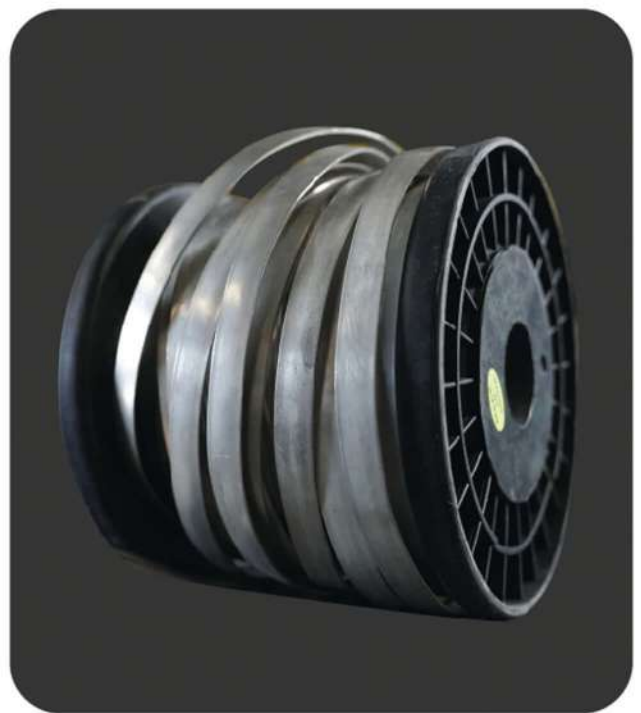
▶ SLACK CABLE HOLDER

Slack cable Holder shall be made of 6mm thick of stainless or galvanized steel, it's to hold the coils in vertical position.



▶ BONDING RIBBON

Made of high quality, flat, seamless annealed tinned copper. It is used for providing a common electrical bonding facility for all cables and joints in manholes or cable vaults.



▶ BONDING WALL CLAMP

Bonding wall clamp shall be manufactured from Galvanized steel and its used for fixing bonding ribbon to walls of manhole and cable vaults.

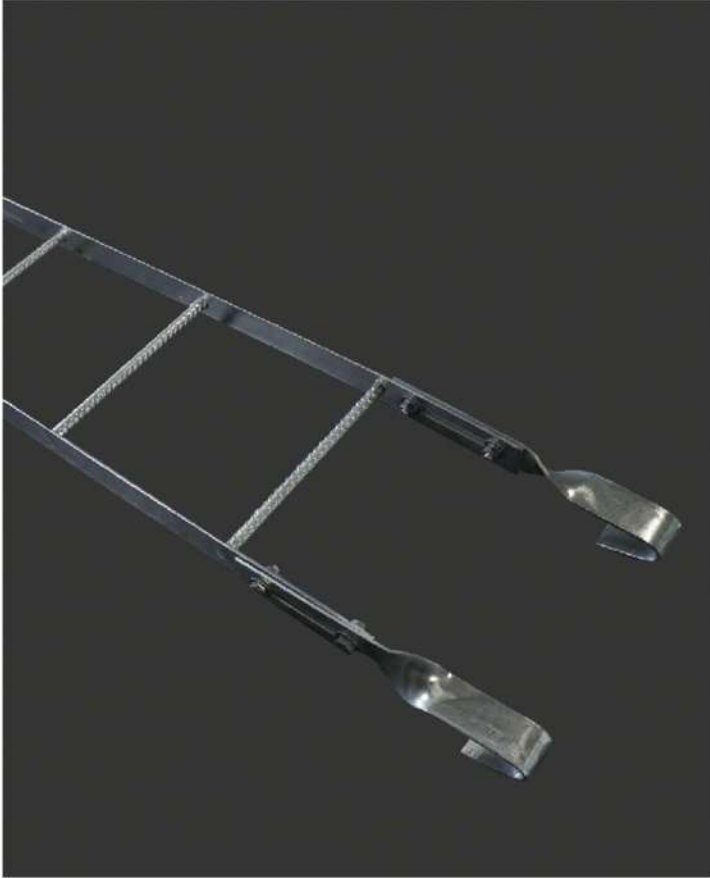


▶ MARKING PLATE

Made up of pure aluminum and installed in the manhole entrance, Marker post, distribution points, etc., for identification purpose



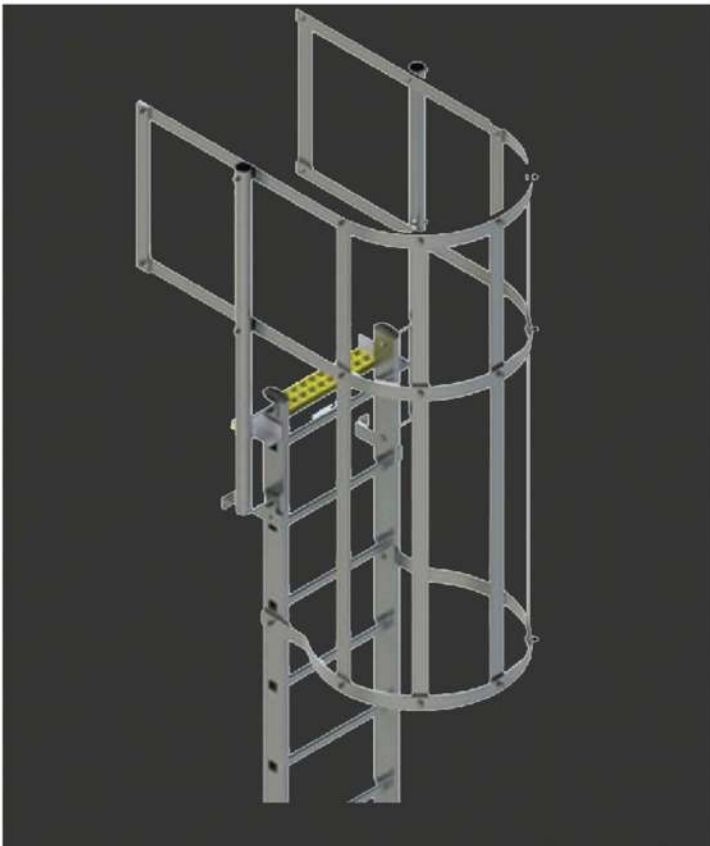
▶ LADDER WITH HOOK



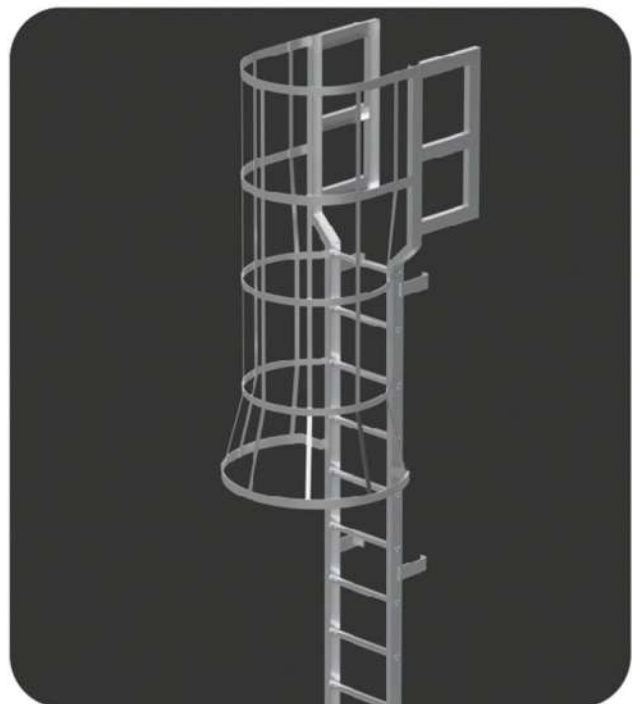
Provides a secure and easy entry into and exit from the manhole. The ladder rungs will be non-slip corrugated steel bars 16mm in diameter, welded to a pair of ladder rails. Each ladder rail will be fitted with a hook, securely fixed to the inner part of the side rails with bolts, lock washers and nuts.

Item code	Length in mm
LD0900	900
LD1000	1000
LD1200	1200
LD1350	1350
LD1550	1550
LD1750	1750
LD2125	2125
LD2700	2700
LD3000	3000

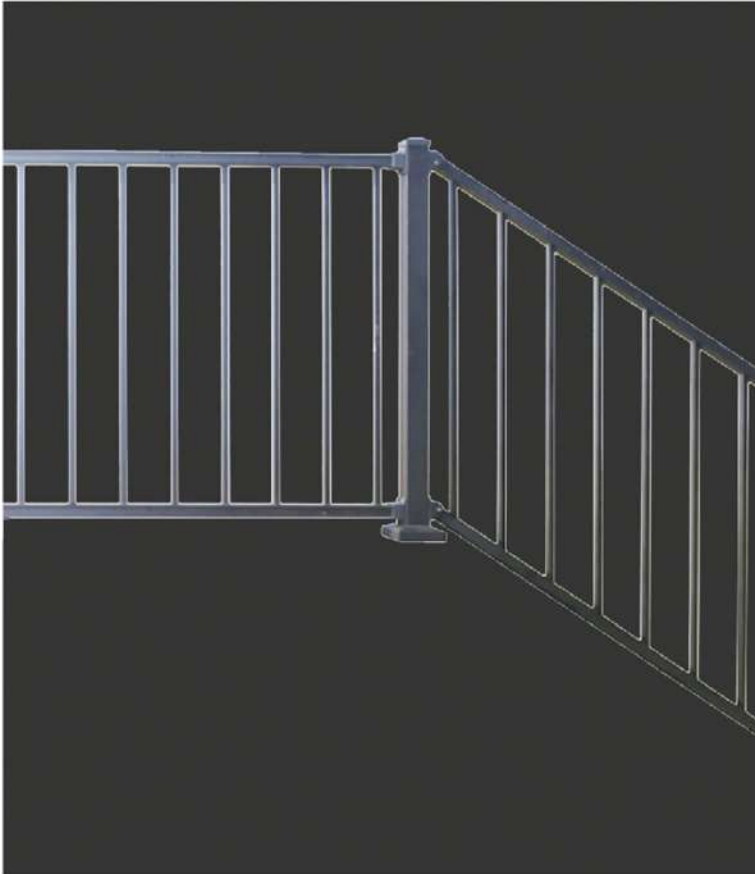
▶ LADDER WITH SAFETY CAGE



Safety cage ladders are very commonly used for where secure access to a roof or upper area. It's a singular fixed cage ladder that shall be manufactured heights from 3 to 10 meters.



▶ HANDRAILS



We manufacture different types of handrails as per customer requirement and provide you many options of designs to choose from.



▶ U GUARD AND CLAMPS



U-Guards protect cable where cable lead from underground to overhead on riser poles applications and it's can be installed with clamp. U-Guard shall be manufactured form a Galvanized steel or Hot-dip galvanized finish.



▶ BUS BAR



Bus bar used to common ground point and power applications, shall be manufactured form pure copper flat bar as per customer requirement and design.



▶ DISTRIBUTION POINT PILLAR



Distribution point pillar (DP Pillar) is designed for the distribution of telecommunication buried service wires. The distribution pillar housing is to be installed into a concrete block.



▶ SWIVEL ARM WITH BRACKETS



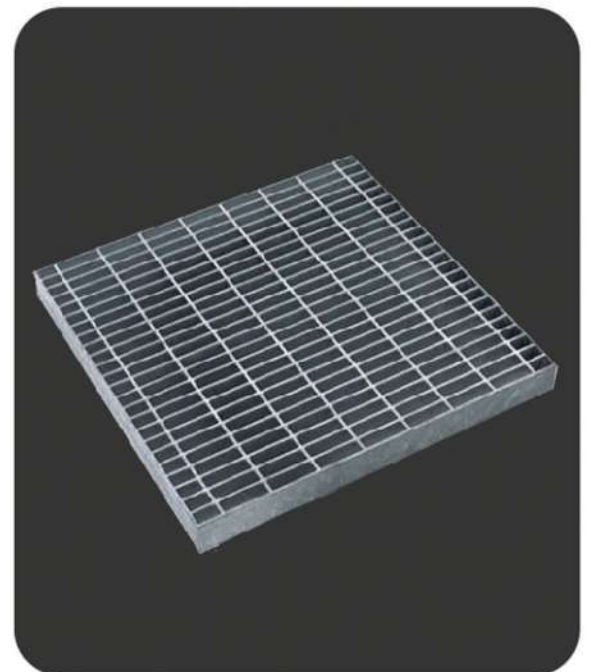
The Swiveling telescopic closure bracket for fastening to the handhole wall as a metallic holder. Swivel arm and bracket shall be manufactured from 4mm thick steel and Hot dip galvanized finish. The structure has to hold a fiber access terminal type of closure distributing the drop cable along with their drop duct and it will be able to load bearing approx. 250 N.

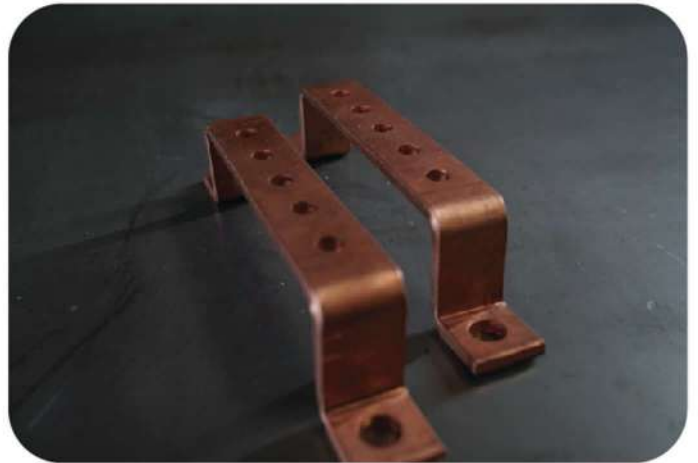


▶ STEEL GRATINGS



Standard steel grating, commonly refers to welded steel grating in large sizes. Easy fabrication and high loads structure are widely used as steel grating platform, walkway, bridge decking and flooring.





▶ VARIOUS TYPES OF FLANGES



We are manufacturing all types of commercial and industrial flanges as per customer's design.



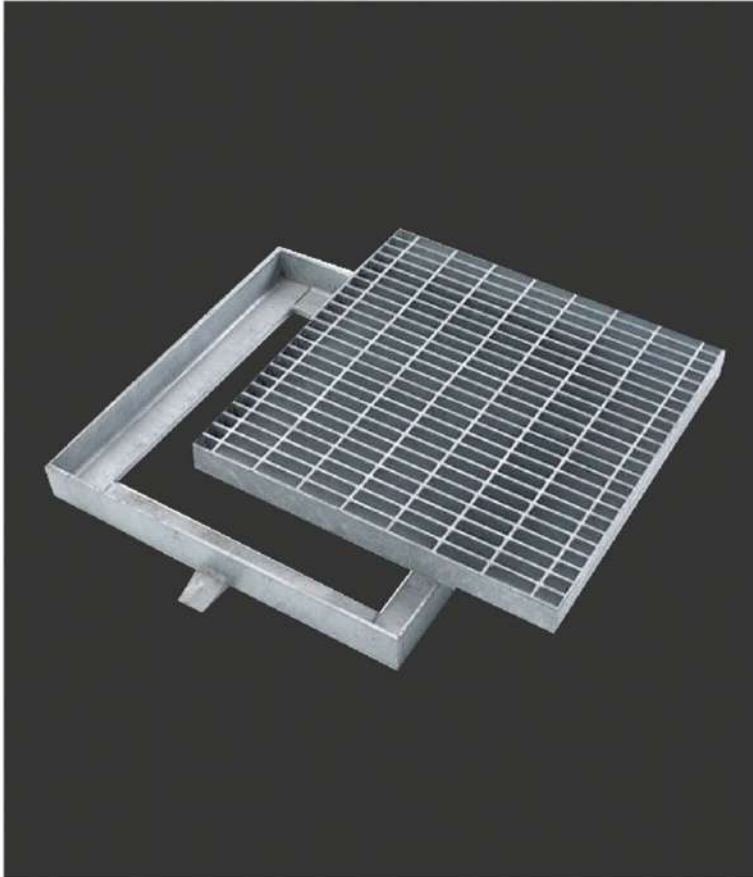
▶ ANCHOR BOLT AND NUTS



All types of anchor bolts are available like "U" "J" "I" "L" and other shape and optional sizes. Anchor bolts are manufactured from Mild steel round bar, Corrugated steel bar and stainless steel with threaded at one or both ends, combined with nuts as per customer's requirement.



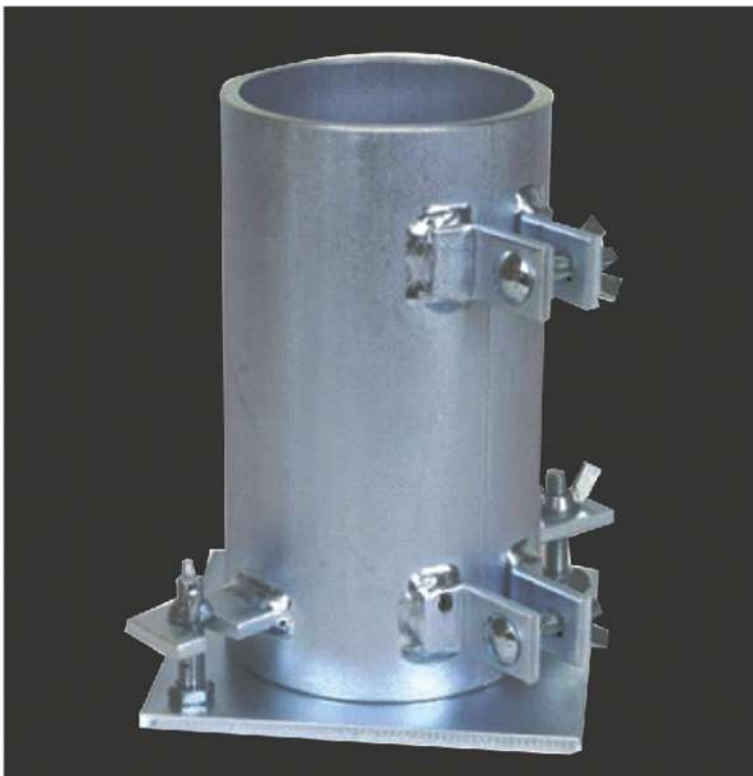
▶ MANHOLE AND HANDHOLE FRAME



We are manufacturing of Manhole and Hand-hole frame as per customer's choice and design. It is available for single cover, 2 cover, 3 cover and 4 cover frames.



▶ CONCRETE CYLINDER MOULD AND CONCRETE BARRIER MOULD



The Concrete Cylinder Moulds and Concrete barrier moulds are manufactured in accordance with dimensions and tolerances in the standards. Two part and clamp attached base steel plate. Hot dip galvanized steel moulds are designed to be corrosion resistant and easy to clean.



▶ MEDIA ACCESSORIES



Different types of media accessories are available

- Camera stand (Different types)
- Truss (Different types)
- Camera poles
- Antenna poles
- Panel box
- Distribution box
- Distribution panels
- Cable roller
- Cable trays and support

▶ WAREHOUSE HANGERS AND SHED



Good looking and economical, our Saudi commercial sheds, factories and industrial metal building meet Saudi building standards are built strong and build right with premium quality material to last the test time.

The customer has assurance and peace of mind that only comes from dealing with qualified building professional committed to delivering high quality workshop and service.



▶ MECHANICAL PARTS FOR ESCALATOR AND ELEVATORS

We are producing mechanical parts for escalator and elevators as per customer's design



▶ MECHANICAL PARTS FOR TRANSFORMERS

Tanks, Frames, Bases and other accessories



Sandwich Panel Anchor System

▶ FLAT SLEEVE ANCHOR

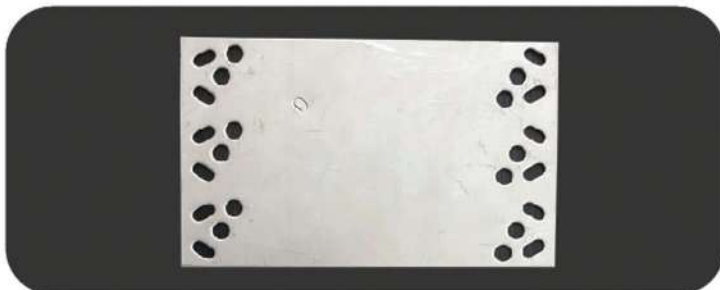
Item Code	Thickness in mm	Length in mm	Height in mm						
			150	175	200	225	260	.	.
GMFSA280XXX	2	80	150	175	200	225	260	.	.
GMFSA2120XXX	2	120	150	175	200	225	260	.	.
GMFSA2160XXX	2	160	150	175	200	225	260	.	.
GMFSA2200XXX	2	200	150	175	200	225	260	.	.
GMFSA2240XXX	2	240	150	175	200	225	260	.	.
GMFSA2320XXX	2	320	150	175	200	225	260	.	.
GMFSA2360XXX	2	360	150	175	200	225	260	.	.
GMFSA2400XXX	2	400	150	175	200	225	260	.	.
GMFSA380XXX	3	80	260	280	300
GMFSA3120XXX	3	120	260	280	300
GMFSA3160XXX	3	160	260	280	300
GMFSA3200XXX	3	200	260	280	300
GMFSA3240XXX	3	240	260	280	300
GMFSA3320XXX	3	320	260	280	300
GMFSA3360XXX	3	360	260	280	300
GMFSA3400XXX	3	400	260	280	300

The Flat sleeve anchor can be used for three or four layer slabs and it's shall be manufactured from 2mm and 3mm thick stainless steel plate.

The item code must be supplemented with the desired height.

e.g :- Flat sleeve anchor Thickness 2mm, length 200mm, height 225mm

Item code: GMFSA2200225



▶ CONNECTOR TIES

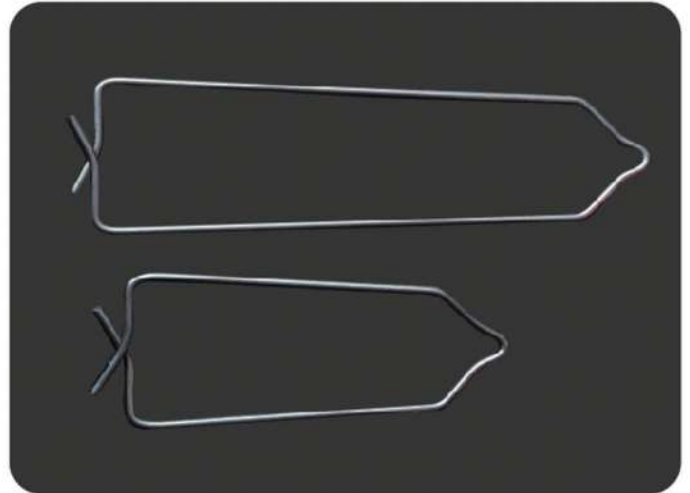
Item Code	Diameter in mm	Width in mm	Height in mm								
GMCT460XXX	4	60	160	180	200	220	240	250	280	320	
GMCT560XXX	5	60	160	180	200	220	240	250	280	320	

The item code must be supplemented with the desired height

e.g :- Connector ties Diameter 5mm, Width 60mm, height 40mm

Item code: GMCT560240

The connector ties can be used for three or four layer slabs and it's shall be manufactured from Stainless steel round bars with diameter of 4mm and 5mm.



▶ CYLINDRICAL SLEEVE ANCHOR

Item Code	Diameter in mm	Height in mm					
GMCSA51XXX	51	150	175	200	225	260	300
GMCSA76XXX	76	150	175	200	225	260	300
GMCSA102XXX	102	150	175	200	225	260	300
GMCSA127XXX	127	150	175	200	225	260	300
GMCSA153XXX	153	150	175	200	225	260	300
GMCSA178XXX	178	150	175	200	225	260	300
GMCSA204XXX	204	150	175	200	225	260	300
GMCSA229XXX	229	150	175	200	225	260	300
GMCSA255XXX	255	150	175	200	225	260	300
	280	150	175	200	225	260	300

The item code must be supplemented with the desired height

e.g.: Cylinder sleeve anchor diameter 51mm,height 260mm

Item code: GMCSA51260

The Cylinder sleeve anchor can be used for three- or four-layer slabs and it's shall be manufactured from Stainless steel round bars with diameter of 1.5mm.



▶ CONNECTOR PINS

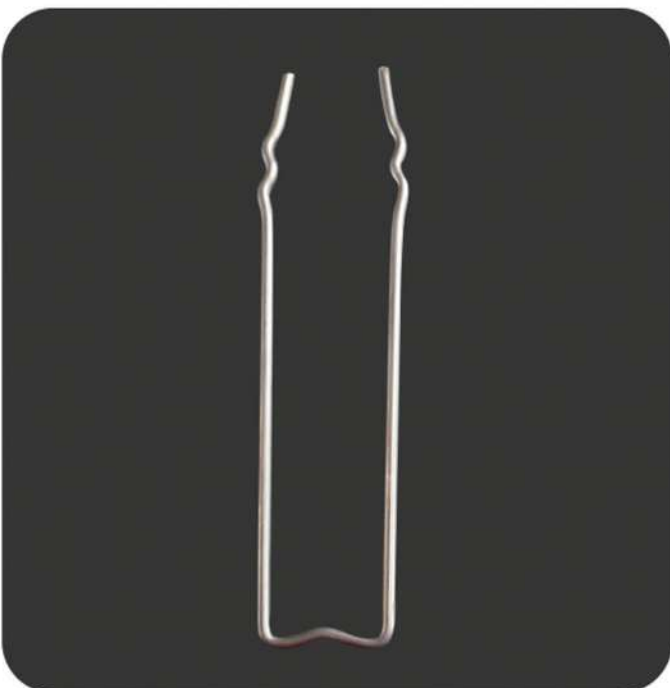
Item Code	Diameter in mm	Width in mm	Height in mm							
GMCP334XXX	3	34	160	180	200	220	240	250	280	320
GMCP340XXX	3	40	160	180	200	220	240	250	280	320
GMCP434XXX	4	34	160	180	200	220	240	260	280	320
GMCP440XXX	4	40	160	180	200	220	240	260	280	320
GMCP535XXX	5	35	240	260	280	300	320	340	360	380
GMCP540XXX	5	40	240	260	280	300	320	340	360	380
GMCP646XXX	6	46	320	340	360	380	400	.	.	.

The item code must be supplemented with the desired height.

e.g:- Connector pins Diameter 4mm, Width 34mm, height 160mm

Item code: GMCT434160

The connector pins can be used for three- or four-layer slabs and it's shall be manufactured from Stainless steel round bars with diameter of 3mm, 4mm, 5mm and 6mm.



▶ SHEAR ANCHOR (SPA-1 & SPA-2)

Item Code	Type	Diameter in mm	Height in mm									
SPA-1-5-XXX-A2	SPA-1	5	160	180
SPA-1-6-XXX-A2	SPA-1	6	160	180	200	220	240	260
SPA-1-8-XXX-A2	SPA-1	8	.	.	200	220	240	260	280	300	320	.
SPA-1-10-XXX-A2	SPA-1	10	340	360
SPA-2-5-XXX-A2	SPA-2	5	160	180
SPA-2-6-XXX-A2	SPA-2	6	160	180	200	220	240	260
SPA-2-8-XXX-A2	SPA-2	8	.	.	200	220	240	260	280	300	320	.
SPA-2-10-XXX-A2	SPA-2	10	340	360

The item code must be supplemented with the desired height.

e.g Shear Anchor Type SPA-2, Diameter 8mm,
Height 240mm

Item code: SPA-2-8-240-A2







P.O.Box No 245342 | Riyadh 11312

☎ +966 11 4487724 | 📠 +966 54 5938100

info@gmetalce.com | www.gmetalce.com